


The logo for METALLIANCE, featuring the word in a bold, red, sans-serif font, centered within a white circle that has a horizontal bar passing through its middle.

**METALLIANCE**

A horizontal banner at the top of the page containing five small images of various construction vehicles and machinery, including a concrete mixer truck, a green tractor, and a yellow road roller.

Z I La Saule  
71230 SAINT VALLIER  
FRANCE

Tel : +33 (0)3.85.57.01.34

Fax : +33 (0)3.85.57.88.73

A horizontal banner at the bottom of the page containing three smaller, faded images of construction equipment, including a green tractor and a yellow road roller.

**E-mail:**  
**[info@metalliance-tsi.com](mailto:info@metalliance-tsi.com)**

## Who are we?

METALLIANCE build innovative construction equipments for infrastructure execution in transportation (roads, tracks...) and in energy fields (oil, nuclear, electricity...)



Self-propelled train on rubber tired wheels 180 tons "TSP 180"

Undersea oil hose laying system



Intervention machine for live high voltage electrical lines "Tip Top"







## Our skills

**A range of standard and customized solutions for targeted applications.**

METALLIANCE, manufacturer of construction equipments, machines and tooling, proposes:

- ~ Construction and machining of weldment assemblies (per unit or series).
- ~ Adapted ranges of specialized equipments for large jobsites and networks,
- ~ Design and manufacturing of specific machines and prototype equipments ,

**These diversified productions call upon high competence and know-how.**



Link beam



"Castor" crane for wood depot



## Our plant and workshops

20 000 m<sup>2</sup> workshops on 9 Ha grounds.



### Our Manufacturing capacities

13 000 hours per month - Manufacturing,

3 500 hours per month - Assembling,

2 500 hours per month Engineering + industrialization





## *Some figures*

*Capital:* 3 565 000 €

*Estimated Turnover 2014:* 26 000 000 €

*Of which export:* 45 %

*Employed Staff:* 125

## METALLIANCE The permanent innovation

### The control of key technologies

- ~ Large size weldment construction,
- ~ Mechanical design on Pro Engineer,
- ~ Hydraulics,
- ~ Manufacturing engineering
- ~ Radio controlled systems.







## Examples for original products dedicated to niche markets

~ **METALLIANCE** invented the self propelled trains on rubber tyred wheels (TSP), used for tunnels construction and renovation, and for subway rail track laying.



~ **METALLIANCE** developed the finisher feeder and road widener for road construction.

**METALLIANCE** proposes a wide range of slipforming pavers, for canals, curbs, raids, airport tarmacs, tunnel aprons



## Our assets

### METALLIANCE assets are :

- ~ **Our customers and partners,**
- ~ Creativity, permanent innovation,
- ~ Adaptation, flexibility, reactivity,
- ~ Integration from design to after sales service through industrialization and per unit or in series manufacturing,
- ~ Welding process control (High-strength steel, abrasion, steel aluminium...),
- ~ Large size parts manufacturing capability,
- ~ ISO 9001 V2008 certified quality system.

Certifié par  
**BUREAU VERITAS**  
Certification







**METALLIANCE**

**BUREAU VERITAS**  
Certification



Certification  
Attribuée à  
**METALLIANCE**  
ZI la Saule  
71230 SAINT VALLIER  
FRANCE

Bureau Veritas Certification certifie que le système de management de la qualité de l'entreprise susmentionnée a été évalué et jugé conforme aux exigences de la norme :

Standard

**NF EN ISO 9001 : 2008**

Domaine d'activité

CONCEPTION, FABRICATION ET ASSEMBLAGE D'ENGINS, DE VÉHICULES SPÉCIAUX, D'ÉQUIPEMENTS INDUSTRIELS.  
CONCEPTION, FABRICATION ET ASSEMBLAGE DE MATÉRIELS VIBRANTS ÉLECTROMAGNÉTIQUES, ELECTROMÉCANIQUES.  
CHAUDRONNERIE, MÉCANOSOUDDAGE, USINAGE, MONTAGE, INSTALLATION. SERVICE APRÈS-VENTE ET PIÈCES DÉTACHÉES.  
DESIGN, MANUFACTURING AND ASSEMBLING OF MACHINES, SPECIAL PURPOSE VEHICLES, INDUSTRIAL EQUIPMENTS.  
DESIGN, MANUFACTURING AND ASSEMBLING OF ELECTROMAGNETICAL, ELECTROMECHANICAL VIBRATING FEEDERS.  
SHEET METAL WORKS, WELDMENTS, MACHINING, FITTING, INSTALLATION. AFTERSALES SERVICE AND SPARE PARTS.

Date de certification originale : 12 octobre 2006

Sous réserve du fonctionnement continu et satisfaisant du système de management de la qualité de l'entreprise, ce certificat est valable jusqu'au **11 juillet 2012**  
Pour vérifier la validité du certificat appelez au + 33(0) 4 76 66 82 69  
Tout éclaircissement sur cette certification peut être obtenu auprès de l'entreprise certifiée.



Date : 27 août 2009  
Numéro d'affaire : 2001445

Bruno LABARRE  
Directeur Général



BUREAU EN CHARGE : Bureau Veritas Certification France - 60, avenue du Général de Gaulle - 93046 Paris La Défense  
BUREAU ÉMETTEUR : Bureau Veritas Certification France - 41, chemin des Puyettes - BP 18 - 91673 Dordrey Cedex



**INTERNATIONAL  
INSTITUTE OF WELDING**



Having met the Education and Training requirements of IIW Guideline 'International Welding Technologist' and by examination having satisfied the requirements of the Examination Board of the IIW Authorised National Body

Name **Mr LAMALLE Frédéric**

Date of birth **May 31<sup>st</sup> 1977**



is hereby awarded the diploma of

**INTERNATIONAL WELDING TECHNOLOGIST**

Date July 16<sup>th</sup> 2008

Diploma N° **FR IWT 00496**

  
Chairman  
Board of Examiners

  
Head  
Training School

  
AFS  
Representative

 ASSOCIATION  
FRANÇAISE  
DU SOUDAGE

Training School :CETE APAVE SUDEUROPE  
33, avenue du Docteur Georges Lévy  
BP 60  
69632 VENISSIEUX CEDEX





## Our market

**Our final markets are constituted of :**

- ~ Public works : large construction jobsites (highways, high speed railroad tracks, tunnels, underground, airports, tramways...),
- ~ Energy networks (hydraulic, gas, oil...),
- ~ material preparation units (landmines, quarries and cement industry...),



...users of equipment goods or high capacity specific machines.



**MATERIAL FOR UNDERGROUND WORKS :**

**TSP** Train on tyres, **VMS** Multipurpose vehicle.



**ANTWERP LIEFKENSHOEK  
TUNNEL**





**SAVERNE LGV TUNNEL**

TSP 90







**LYON METRO LINE B**

TSP 70





TAMI



MIAMI



VMS 60 SLOPE 15%





**WARSAW METRO**

VACV 25







LIEFKENSHOEK

TSP 70 - 70T



GROENE HART - TSP90





**MIAMI**

**VMS 60**






**METALLIANCE**



**LIEFKENSHOEK**



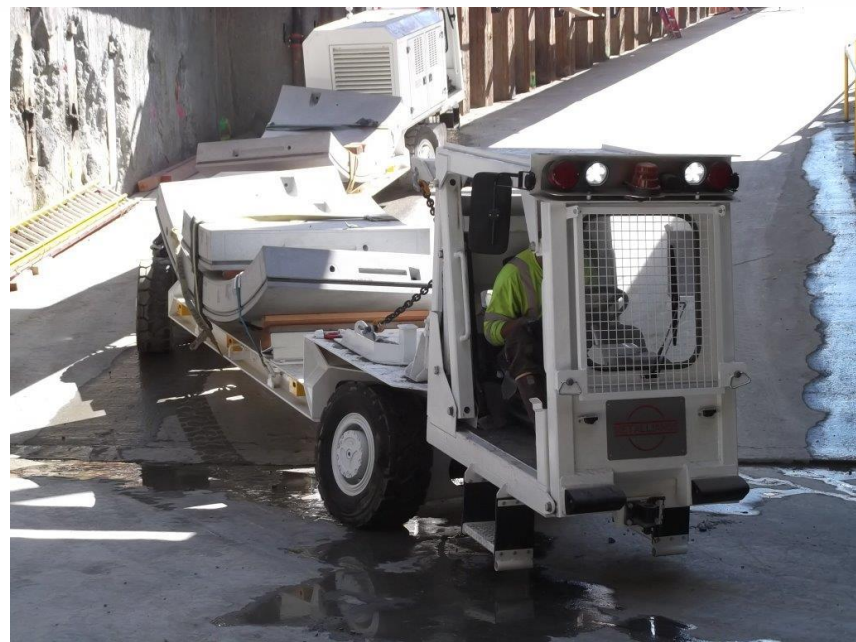
**TSP 70 + CRANE**







## SAN FRANCISCO METRO



### GUIDANCE IN THE BACK UP



MAX SLOPE 20%

STEERING RADIUS 30 m



**METALLIANCE**

**ALSKAN WAY SEATTLE**



**TSP180 - 180T**

**THE BIGGEST OVER THE WORLD**



**MATERIAL FOR UNDERGROUND WORKS**



**SAVERNE**



**BRISBANE**

**MENRIDER**



TRACK LAYING

TAÏPEI METRO RAIL



07.11.2005



**METALLIANCE**

**PANAMA METRO**



**TOULOUSE METRO**





**VS - RESCUE VEHICLES**



**HALLANDSAS**



**BUÑOL**



A collage of various industrial vehicles and machinery, including forklifts, trucks, and specialized equipment, arranged in a grid-like pattern. The images are semi-transparent and overlaid on a white background.

***FOR YOUR FUTURE PROJECTS***

**METALLIANCE IS PRESENTLY DEVELOPPING A RANGE OF FULL  
ELECTRIC POWERED VEHICLES UP TO 40T CAPACITY**

## MATERIAL FOR UNDERGROUND WORKS :

**BUTOR** Tool carrying robot





**MATERIAL FOR UNDERGROUND WORKS :**

**BUTOR** Tool carrying robot



01.02.2011 11:06



**SPECIAL TRANSPORT**

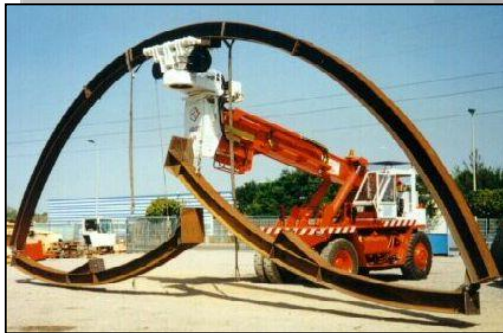
Rails transporter



Beam transport and machine



Arch erector



Segments transport vehicle



Train pulling machine







## Our customers

### Our customers are :

- ~ World famous **construction equipment and engineering's manufacturers**, who incorporate the Metalliance equipments in their products or offers.
  - ~ Final users, **large building contractors or infrastructures operators**, who use Metalliance equipments on their building sites, production sites and networks.
  - ~ **Basic material suppliers.**
- 

## OUR REFERENCES

YEAR	LOCATION	TYPE	CAPACITY	NUMBER	TYPE
1993:	Lille	Metro	28T	3	TSP 28
1995:	Lille	Metro	28t	4	VMS 28L
1996	Lisbonne	Metro	20t	4	VMS 20
1997	Rennes	Metro	28t	4	VMS 28L
1998	Toulouse	Metro Line A	28t	4	VMS 28L
1999	Paris	Metro: Meteor	18t	1	Segm. supply robot
2000	Paris	Road A86	16t	2	VMS 16 + VMS tube carrier
2001	Heathrow	Metro		2	Tools carrier robot
2002	Geneva	CERN	16t	3	TSP 16EL
2003	Groen Hart	High speed rail	90t	8	TSP 90
2004	Hai Van Viet	Rail		2	Tools carrier robot
2005	Swiss Alps	Rail	90t	4	TSP 90
2006	Toulouse	Metro line B	20t	2	VMS 20
2007	ADG Airport	Metro	20t	2	VMS 20
2008	Taipei	Metro	20t	1	VMS20
2009	Hallandsas	Rail	30t	1	VS 20 persons
2010	Turin	Metro	20t	2	VMS 20
2011	Barcelona	Metro	20t	1	VMS 20
2006	Los Angeles	Metro		1	Tool carrier robot
2006	London	Metro		1	Robot
2007	Barcelona	Metro	50t	1	VMS



## OUR REFERENCES

YEAR	LOCATION	TYPE	CAPACITY	NUMBER	TYPE
2007	Hubertus	High Speed rail	90t	1	TSP 90
2007	Bunol	High speed rail		4	VS EL 12 persons
2007	A41	Road	90t	4	TSP 90
2007	Perthus	High speed rail		3	LOCO + Commanders
2008	Modane	Rail		1	TOOL CARRIER ROBOT
2009	Toulon	Road		1	TOOL CARRIER ROBOT
2008	Marseille	Metro	60t	1	TSP concrete
2009	Jenbach (Aust.)	High speed rail		1	TOOL CARRIER ROBOT
2009	Paris	Metro Line 12	78t	3	TSP 78
2010	Antwerpen	Rail	70t	5	TSP 70
2010	Antwerpen	Rail	20t	2	VMS 20
2010	Antwerpen	Rail		2	TOOL CARRIER ROBOT
2011	Lyon	Metro line B	75t	2	TSP 75
2011	Lyon	Metro line B		1	MENRIDER
2011	Singapore	Metro	20t	2	VMS 20
2011	Miami	Road	60t	4	VMS 60
2011	Ankara	Road	50t	5	VMS 50
2012	Warsaw	Metro	25t	8	VACV 25
2013	Saverne	Rail	90t	2	TSP 90
2012	Panama	Rail	30t	2	VMS 30
2012	Brisbane	Rail		2	Menrider

## OUR REFERENCES

2013 Seattle	Road	180t	6	TSP 180, VMS 25, Menrider
2013 San Francisco	Metro	25t	4	TSP 25
2013 Frejus	Road	85t	2	TSP 85
2013 Savona	Road	60t	2	TSP 60
2013 Nedre Rossaga	Water	25t	2	VMS 25
2013 Istanbul	Rail	130t	3	TSP 130

## UNDER CONSTRUCTION

2013 Seattle	Road	75t	2	TSP 75
2013 Caltanissetta	Rail	140t	2	TSP 140
2014 Seattle	Metro	25t	7	VMS 25
2014 Sydney	Metro	50t	15	TSP 50, VMS, Menrider
2014 Caracas	Metro	50t	11	VMS 50, VMS 25, Menrider
2014 Rennes	Metro	90t	6	TSP 90, VMS 25, Menrider

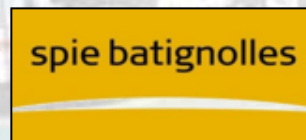




AMONG OUR CUSTOMERS...



AMONG OUR CUSTOMERS...







AMONG OUR CUSTOMERS...







